

# Programs & Courses 2010-11

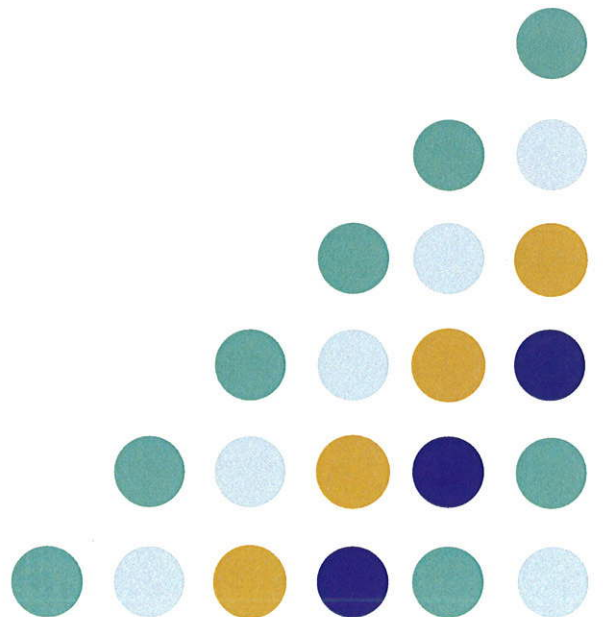
Brevard Public Schools



Career & Technical Education  
...preparing students for *SUCCESS*

Office of Career & Technical Education

Brevard Public Schools



Brevard Public Schools



**Career & Technical Education**  
...preparing students for *SUCCESS*

## **Program Offerings 2010 - 2011**

*The Office of Career & Technical Education provides leadership, service and connections to prepare learners for life, work and careers.*

To contact the Office of Career & Technical Education call:  
**321-633-1000 extension 380**

or

Visit our website at:  
<http://ctebrevard.com/>

**Superintendent**

Brian Binggeli, Ed.D.

**Brevard County School Board Members**

Amy Kneessy, Chairman

Dr. Barbara Murray, Vice-Chairman

Karen Henderson

Robert Jordan

Andy Ziegler

May 2010

# TABLE OF CONTENTS

<b>CONTENTS</b>	<b>PAGE</b>
Career & Technical Contact Information	iii
Career & Technical Lab Utilization Chart	iv
<b>PROGRAM AREA</b>	
Orientation / Exploration	1
Business Technology Education	2
Family and Consumer Sciences	4
Health Science Education	6
Industrial Education	7
Marketing Education	9
Public Service Education	10
Technology Education	11
Career Academies and Career Clusters	12
Dual Enrollment (A.S., C.C.C., A.A.S., PSAV)	13
Advance Standing	13

**Where Career and Technical Education programs are comprised of sequential courses, the program titles are printed in BOLD and the course numbers and titles are listed below the program title.**



**School Board of Brevard County  
Career and Technical Programs/Courses  
2010-2011**

**ORIENTATION / EXPLORATION - Grades 7 & 8**

<b>FTE Prog. No.</b>	<b>Course Number</b>	<b>Program and Course Titles</b>	
102	8000200*	M/J Exploratory Career Wheel 1 & Career Planning	Career Exploratory Wheel
102	8000210	M/J Exploratory Career Wheel 2	Technology Education
102	8000220	M/J Exploratory Career Wheel 3	Family and Consumer Sciences
102	8000230	M/J Exploratory Career Wheel 4	Business Technology Education
102	8200110	Business Keyboarding	
102	8200120	Business Leadership Skills	
102	8409100	Careers in Education	
102	8209100	Careers in Fashion and Interior Design	
102	8200220	Computer Applications in Business 1	
102	8200210	Computer Applications in Business 2	
102	8809200	Culinary Careers	
102	8600030	Exploration of Communications Technology	
102	8600040	Exploration of Production Technology	
102	8600020	Exploring Technology	
102	8600010	Introduction to Technology	
102	8500230	Personal Development	
102	8209020**	Computing for College and Careers (8 <sup>th</sup> grade only at pilot middle schools)	Arts, AV, Technology and Communication Career Cluster

\*Required A++ Legislation – career and education planning course

\*\* Computing for College and Careers – 1 high school elective credit offered in 2010-2011 SY to 8<sup>th</sup> graders only at pilot middle schools. This is a core course in the high school business education sequential programs – see pages 2 and 3.

# BUSINESS TECHNOLOGY EDUCATION

## Grades 9 - 12

FTE Prog. No.	Program/ Course Number	Program and Course Titles	State Level	Occupational Completion Points	PS/HS Credits	Performing Fine Arts/Science/ Social Studies Substitutions *	Career Cluster
300	8200410	Business Cooperative Education - OJT	2		Multiple		Business Management & Administration
300	8200420	Business Cooperative Education Organization and Management	2		Multiple		Business Management & Administration
300	8200100	Business Education Directed Study	2		Multiple		Business Management & Administration
300	8200330	Computer & Business Skills	2		.5		Business Management & Administration
300	8200320	Keyboarding & Business Skills	2		.5		Business Management & Administration
300	8203400	Accounting Operations					Business Management & Administration
	8209020	Computing for College and Careers	2	A	1.0		
	8203310	Accounting Applications 1	2		1.0		
	8203320	Accounting Applications 2	2	B	1.0		
300	8212500	Administrative Assistant					Business Management & Administration
	8209020	Computing for College and Careers	2	A	1.0		
	8212120	Business Software Applications 1	2	B	1.0		
	8209510	Digital Design 1	2	C	1.0		
300	8215200	Business Supervision & Management					Business Management & Administration
	8209020	Computing for College and Careers	2	A	1.0		
	8215120	Business & Entrepreneurship Principles	3		1.0		
	8215130	Legal Aspects of Business	3	B	1.0		
	8215140	Business Supervision 1	2		1.0		
300	8209600	Digital Design					Arts, A/V Technology & Communication
	8209020	Computing for College and Careers	2	A	1.0		
	8209510	Digital Design 1	2	B	1.0	PFA	
	8209520	Digital Design 2	3		1.0	PFA	
	8209530	Digital Design 3	3	C	1.0	PFA	

\* PFA = Performing & Fine Arts Credit

SC = 4<sup>th</sup> Science Credit

SS = 4<sup>th</sup> Social Studies Credit

# BUSINESS TECHNOLOGY EDUCATION

## Grades 9 - 12 (continued)

FTE Prog. No.	Program/ Course Number	Program and Course Titles	State Level	Occupational Completion Points	PS/HS Credits	Performing Fine Arts/Science/ Social Studies Substitutions*	Career Cluster
<b>300</b>	<b>8216100</b>	<b>International Business</b>					<b>Business Management &amp; Administration</b>
	8209020	Computing for College and Careers	2	A	1.0		
	8203310	Accounting Applications 1	2		1.0		
	8216110	International Business Systems	2		1.0		
	8216120	International Finance and Law	3		1.0		
	8216130	Business Internship	2	B	1.0		
<b>300</b>	<b>8212300</b>	<b>Medical Administrative Specialist</b>					<b>Business Management &amp; Administration</b>
	8209020	Computing for College and Careers	2	A	1.0		
	8212201	Medical Office Technology 1	2	B	1.0		
	8212202	Medical Office Technology 2	2	C	1.0		
<b>300</b>	<b>8208000</b>	<b>Network Support Services</b>					<b>Information Technology</b>
	8209020	Computing for College and Careers	2	A	1.0		
	8207020	Networking 1	2	B	1.0		
	8207030	Networking 2 Infrastructure	3	C	1.0		
<b>300</b>	<b>8207400</b>	<b>New Media Technology</b>					<b>Information Technology</b>
	8209020	Computing for College and Careers	2	A	1.0		
	8207410	New Media & Digital Imaging Fundamentals	2	B	1.0	PFA	
	8207420	Digital Video & Sound Fundamentals	2	C	1.0	PFA	
	8207110	Web Design 1	2	D	1.0	PFA	
<b>300</b>	<b>8207340</b>	<b>PC Support Services</b>					<b>Information Technology</b>
	8209020	Computing for College and Careers	2	A	1.0		
	8207210	PC Support 1	2		1.0		
	8207220	PC Support 2	3	B	1.0		
	8207230	PC Support 3	3		1.0		
<b>300</b>	<b>8207500</b>	<b>Web Design</b>					<b>Information Technology</b>
	8209020	Computing for College and Careers	2	A	1.0		
	8207110	Web Design 1	2		1.0	PFA	
	8207120	Web Design 2	3	B	1.0	PFA	
	8207130	Web Design 3	3		1.0	PFA	

\* PFA = Performing & Fine Arts Credit

SC = 4th Science Credit

SS = 4th Social Studies Credit

# FAMILY AND CONSUMER SCIENCES

## Grades 9 - 12

FTE Prog. No.	Program/ Course Number	Program and Course Titles	State Level	Occupational Completion Points	PS/HS Credits	Performing Fine Arts/Science/ Social Studies Substitutions*	Career Cluster
300	8500310	Child Development	2		.5		Education & Training
300	8500380	Fabric Construction	2		.5	PFA	Arts, A/V Technology & Communication
300	8500345	Family Dynamics	2		.5		Human Services
300	8500395	Food Science Technology	2		1.0	SC	Agriculture, Food & Natural Resources
300	8500355	Nutrition and Wellness	2		.5	SC	Health Science
300	8500300	Parenting Skills	2		.5		Human Services
300	8500120	Personal & Family Finance	2		.5		Finance
300	8500390	Principles of Food Preparation	2		.5		Hospitality & Tourism
300	8800500	<b>Culinary Arts</b>					Hospitality & Tourism
	8800510	Culinary Arts 1	2	A	1.0	PFA	
	8800520	Culinary Arts 2	2	B	1.0	PFA	
	8800530	Culinary Arts 3	2	C	1.0	PFA	
	8800540	Culinary Arts 4	3	D	1.0	PFA	
		<b>or</b>					
		<b>Culinary Operations – (Voc. Dual Enroll)</b>					
300	8800510	Culinary Arts 1	2	A	1.0	PFA	
103	FSS 0208	Food Production I, Stocks & Sauces	N/A		3/5		
103	FSS 0228	Food Production II, Presentation & Service	N/A		3/5	PFA	
103	FSS 0064	Pastries & Desserts	N/A		3/5	PFA	
103	FSS 0740	Regional Cuisine – American & International	N/A		3/5	PFA	

\* PFA = Performing & Fine Arts Credit      SC = 4th Science Credit      SS = 4th Social Studies Credit

## FAMILY AND CONSUMER SCIENCES

### Grades 9 – 12 (continued)

FTE Prog. No.	Program/ Course Number	Program and Course Titles	State Level	Occupational Completion Points	PS/HS Credits	Performing Fine Arts/Science/ Social Studies Substitutions *	Career Cluster
<b>300</b>	<b>8503210</b>	<b>Early Childhood Education</b>					<b>Education &amp; Training</b>
	8503211	Early Childhood Education 1	<b>2</b>	<b>A and B</b>	<b>1.0</b>		
	8503212	Early Childhood Education 2	<b>2</b>		<b>1.0</b>	<b>PFA</b>	
	8503213	Early Childhood Education 3	<b>2</b>	<b>C</b>	<b>1.0</b>	<b>PFA</b>	
	8503214	Early Childhood Education 4	<b>3</b>	<b>D</b>	<b>1.0</b>		
		<b>or</b>					
		<b>Early Childhood Education – Infant/Toddler Specialization, College Credit Certificate</b>					
<b>300</b>	8503211	Early Childhood Education 1	<b>2</b>	<b>A and B</b>	<b>1.0</b>		
<b>103</b>	EEC 1001	Introduction to Early Childhood Education	N/A		<b>3/5</b>	<b>PFA</b>	
<b>103</b>	EEC 1200	Early Childhood Curriculum	N/A		<b>3/5</b>	<b>PFA</b>	
<b>103</b>	EEC 2710	Conflict Resolution in Early Childhood Education	N/A		<b>3/5</b>	<b>PFA</b>	
<b>103</b>	CHD 1200	Infant/Toddler Development	N/A		<b>3/5</b>	<b>PFA</b>	
<b>300</b>	<b>8506400</b>	<b>Fashion Design Services</b>					<b>Arts, A/V Technology &amp; Communication</b>
	8506405	Design Services Core	<b>2</b>	<b>A</b>	<b>1.0</b>	<b>PFA</b>	
	8506410	Principles of Fashion Design Services	<b>2</b>	<b>B</b>	<b>1.0</b>	<b>PFA</b>	
	8506420	Pattern Design Techniques	<b>2</b>	<b>C</b>	<b>1.0</b>	<b>PFA</b>	
	8506430	Fashion Design Specialist	<b>3</b>	<b>D</b>	<b>1.0</b>	<b>PFA</b>	
<b>300</b>	<b>8506500</b>	<b>Interior Design Services</b>					<b>Arts, A/V Technology &amp; Communication</b>
	8506405	Design Services Core	<b>2</b>	<b>A</b>	<b>1.0</b>	<b>PFA</b>	
	8506540	Principles of Interior Design Services	<b>2</b>	<b>B</b>	<b>1.0</b>	<b>PFA</b>	
	8506550	Interior Design Techniques	<b>2</b>	<b>C</b>	<b>1.0</b>	<b>PFA</b>	
	8506560	Interior Design Specialist	<b>3</b>	<b>D</b>	<b>1.0</b>	<b>PFA</b>	

\* PFA = Performing & Fine Arts Credit      SC = 4th Science Credit      SS = 4th Social Studies Credit

# HEALTH SCIENCES EDUCATION

## Grades 9 - 12

FTE Prog. No.	Program/ Course Number	Program and Course Titles	State Level	Occupational Completion Points	PS/HS Credits	Performing Fine Arts/Science/ Social Studies Substitutions *	Career Cluster	
<b>300</b>	<b>8417130</b>	<b>Allied Health Assisting</b>				<b>Program Completion = 4th Science Credit</b>	<b>Health Science</b>	
	8417100	Health Science 1	2		1.0			
	8417110	Health Science 2	2	A	1.0			
	8417131	Allied Health Assisting 3	2	B	1.0			
<b>300</b>	<b>8417140</b>	<b>Dental Aide</b>				<b>Program Completion = 4th Science Credit</b>	<b>Health Science</b>	
	8417100	Health Science 1	2		1.0			
	8417110	Health Science 2	2	A	1.0			
	8417141	Dental Aide 3	2	B	1.0			
<b>300</b>	<b>8417170</b>	<b>First Responder</b>				<b>Program Completion = 4th Science Credit</b>	<b>Health Science</b>	
	8417100	Health Science 1	2		1.0			
	8417110	Health Science 2	2	A	1.0			
	8417171	First Responder 3	2	B	1.0			
<b>300</b>	<b>8417000</b>	<b>Health and Wellness</b>				<b>Program Completion = 4th Science Credit</b>	<b>Health Science</b>	
	8417100	Health Science 1	2		1.0			
	8417110	Health Science 2	2	A	1.0			
	8417120	Health and Wellness 3	2	B	1.0			
<b>300</b>	<b>8417210</b>	<b>Nursing Assistant</b>				<b>Program Completion = 4<sup>th</sup> Science Credit</b>	<b>Health Science</b>	
	8417100	Health Science 1	2		1.0			
		<b>or</b>						
	8417110	Health Science 2	2	A	1.0			
		<b>or</b>						
	<b>103</b>	HSC 1000	Introduction to Health Care	N/A				3/5
	<b>103</b>	HSC 1532	Advanced Medical Terminology	N/A				3/5
			<b>and</b>					
	<b>103</b>	HCP 0001	Fundamentals of Health Careers	N/A				3/5
	<b>103</b>	HCP 0120	Nursing Assistant	N/A				3/5
<b>103</b>	HCP 0310	Home Health Aid	N/A		1/2			
<b>103</b>	HCP 0620	Patient Care Assistant	N/A		3/5			
<b>103</b>	EMS 1059	First Responder: Emergency Care	N/A		3/5			

\* PFA = Performing & Fine Arts Credit      SC = 4th Science Credit      SS = 4th Social Studies Credit

# INDUSTRIAL EDUCATION

## Grades 9 – 12

FTE Prog. No.	Program/ Course Number	Program and Course Titles	State Level	Occupational Completion Points	PS/HS Credits	Performing Fine Arts/Science/ Social Studies Substitutions *	Career Cluster
300	8700400	<b>Industrial Cooperative Education - OJT</b>	2		Multiple		Manufacturing
300	8723000	<b>A/C Refrigeration and Heating</b>					Architecture & Construction
	8713010	A/C Refrigeration and Heating Technology 1	2		1.0		
	8713020	A/C Refrigeration and Heating Technology 2	2	A	1.0		
	8713030	A/C Refrigeration and Heating Technology 3	2		1.0		
	8713040	A/C Refrigeration and Heating Technology 4	2	B	1.0		
300	9200100	<b>Automation &amp; Production Technology</b>					Manufacturing
	9200110	Automation & Production Technology 1	2	A	1.0		
	9200120	Automation & Production Technology 2	2	B	1.0		
	9200130	Automation & Production Technology 3	3	C	1.0		
300	8709000	<b>Automotive Collision Repair and Refinishing</b>					Transportation, Distribution & Logistics
	8709010	Automotive Collision Repair and Refinishing 1	2		1.0		
	8709020	Automotive Collision Repair and Refinishing 2	2		1.0		
	8709030	Automotive Collision Repair and Refinishing 3	2	A	1.0		
	8709040	Automotive Collision Repair and Refinishing 4	2	B	1.0		
	8709050	Automotive Collision Repair and Refinishing 5	2	C	1.0		
	8709060	Automotive Collision Repair and Refinishing 6	2		1.0		
300	8709400	<b>Automotive Service Technology</b>					Transportation, Distribution & Logistics
	8709410	Automotive Service Technology 1	2	A	1.0		
	8709420	Automotive Service Technology 2	2	B	1.0		
	8709430	Automotive Service Technology 3	2	C	1.0		
	8709440	Automotive Service Technology 4	2	D	1.0		
	8709450	Automotive Service Technology 5	2	E	1.0		
	8709460	Automotive Service Technology 6	2	F	1.0		
	8709470	Automotive Service Technology 7	3	G	1.0		
	8709480	Automotive Service Technology 8	3		1.0		
300	8725000	<b>Drafting</b>					Architecture & Construction
	8725010	Drafting 1	2	A	1.0	PFA	
	8725020	Drafting 2	2		1.0	PFA	
	8725030	Drafting 3	3		1.0	PFA	
	8725040	Drafting 4	3	B	1.0	PFA	
300	8751000	<b>Marine Service Technology</b>					Transportation, Distribution & Logistics
	8751010	Marine Service 1	2		1.0		
	8751020	Marine Service 2	2	A	1.0		
	8751030	Marine Service 3	2	B	1.0		
	8751040	Marine Service 4	2		1.0		
	8751050	Marine Service 5	2		1.0		
	8751060	Marine Service 6	2		1.0		

\* PFA = Performing & Fine Arts Credit

SC = 4th Science Credit

SS = 4th Social Studies Credit

# INDUSTRIAL EDUCATION

## Grades 9 – 12 (continued)

<b>FTE Prog. No.</b>	<b>Program/ Course Number</b>	<b>Program and Course Titles</b>	<b>State Level</b>	<b>Occupational Completion Points</b>	<b>PS/HS Credits</b>	<b>Performing Fine Arts/Science/ Social Studies Substitutions *</b>	<b>Career Cluster</b>
<b>300</b>	<b>8772100</b>	<b>Television Production</b>					<b>Arts, A/V Technology &amp; Communication</b>
	8772110	Television Production 1	<b>2</b>		<b>1.0</b>	<b>PFA</b>	
	8772120	Television Production 2	<b>2</b>		<b>1.0</b>	<b>PFA</b>	
	8772130	Television Production 3	<b>3</b>	<b>A</b>	<b>1.0</b>		
	8772140	Television Production 4	<b>3</b>		<b>1.0</b>		
	8772150	Television Production 5	<b>3</b>		<b>1.0</b>	<b>PFA</b>	
	8772160	Television Production 6	<b>3</b>	<b>B</b>	<b>1.0</b>	<b>PFA</b>	

\* *PFA = Performing & Fine Arts Credit*      *SC = 4th Science Credit*      *SS = 4th Social Studies Credit*

# MARKETING EDUCATION

## Grades 9 - 12

FTE Prog. No.	Program/ Course Number	Program and Course Titles	State Level	Occupational Completion Points	PS/HS Credits	Performing Fine Arts/Science/ Social Studies Substitutions *	Career Cluster
300	8812000	<b>Business Ownership</b>	3		1.0		Marketing Sales & Service
300	8800410	Marketing Cooperative Education - OJT	2		Multiple		Marketing Sales & Service
300	8800100	Marketing Education Directed Study	2		Multiple		Marketing Sales & Service
300	8815100	<b>Finance</b>					Finance
	8815150	Finance and Business Technology	2	A	1.0		
	8815110	Financial Operations	3	B	1.0		
	8815120	Personal Financial Planning	3	C	1.0		
	8815130	Financial Internship <b>OR</b>	2	B	1.0		
	8800410	Marketing Cooperative Education OJT	2	B	Multiple		
	8203310	Accounting Applications 1	2		1.0		
300	8845100	<b>Hospitality and Tourism</b>					Hospitality & Tourism
	8850110	Introduction to Hospitality and Tourism	2	A	1.0		
	8845140	Computer Tech for Travel and Tourism	2		1.0		
	8845130	Hospitality and Tourism Internship <b>OR</b>	2	B	1.0		
	8800410	Marketing Cooperative Education OJT	2	B	Multiple		
	8845120	Travel and Tourism Marketing and Management	3	C	1.0		
300	8827100	<b>Marketing</b>					Marketing Sales & Service
	8827110	Marketing Essentials	2		1.0		
	8827120	Marketing Applications	2	A	1.0	PFA	
	8827130	Marketing Management	2	B	1.0	PFA	

\* PFA = Performing & Fine Arts Credit      SC = 4th Science Credit      SS = 4th Social Studies Credit

# PUBLIC SERVICE EDUCATION

## Grades 9 - 12

<b>FTE Prog. No.</b>	<b>Program/ Course Number</b>	<b>Program and Course Titles</b>	<b>State Level</b>	<b>Occupational Completion Points</b>	<b>PS/HS Credits</b>	<b>Performing Fine Arts/Science/ Social Studies Substitutions *</b>	<b>Career Cluster</b>
<b>300</b>	<b>8918000</b>	<b>Criminal Justice Operations</b>				<b>Program Completion = 4<sup>th</sup> Social Studies Credit</b>	<b>Law, Public Safety &amp; Security</b>
	8918010	Criminal Justice Operations 1	2	A	1.0		
	8918020	Criminal Justice Operations 2	2		1.0		
	8918030	Criminal Justice Operations 3	3		1.0		
<b>300</b>	<b>8916000</b>	<b>Environmental Studies Water Resources Technology</b>				<b>Program Completion = 4<sup>th</sup> Science Credit</b>	<b>Agriculture, Food &amp; Natural Resources</b>
	8913010	Introduction to Environmental Technology	2		1.0		
	8913020	Environmental Technology 2	2	A	1.0		
	8916010	Water Quality Resources 3	3		1.0		
	8916020	Water Quality Resources 4	3	B	1.0		
<b>300</b>	<b>8909000</b>	<b>Teacher Assisting</b>					<b>Education &amp; Training</b>
	8909010	Teacher Assisting 1	2	A	1.0		
	8909020	Teacher Assisting 2	2		1.0		
	8909030	Teacher Assisting 3	2		1.0		
	8909040	Teacher Assisting 4	2	B	1.0		

\* PFA = Performing & Fine Arts Credit      SC = 4th Science Credit      SS = 4th Social Studies Credit

# TECHNOLOGY EDUCATION

## Grades 9 - 12

FTE Prog. No.	Program/ Course Number	Program and Course Titles	State Level	Occupational Completion Points	PS/HS Credits	Performing Fine Arts/Science/ Social Studies Substitutions *	Career Cluster
300	8601900	Advanced Technology Applications	3		Multiple (Max. = 3.0)	PFA	STEM
300	8601800	Work-Based Experience	2		Multiple (Max. = 3.0)		STEM
300	8601000	Communications Technology					STEM
	8601010	Communications Technology I	2		1.0	PFA	
	8601020	Communications Technology II	2		1.0	PFA	
	8601030	Communications Technology III	3		1.0	PFA	
300	8600700	Construction Technology					STEM
	8600710	Construction Technology I	2		1.0		
	8600720	Construction Technology II	2		1.0	PFA	
	8600730	Construction Technology 3III	3		1.0	PFA	
300	8600800	Drafting/Illustrative Design Technology					STEM
	8600810	Drafting/Illustrative Design Technology I	2		1.0	PFA	
	8600820	Drafting/Illustrative Design Technology II	2		1.0	PFA	
	8600830	Drafting/Illustrative Design Technology III	3		1.0	PFA	
		<b>Drafting –College Credit Certificate</b>					Architecture & Construction
103	TARC1120	Architectural Drafting	N/A		4/7	PFA	
103	ETDC2320	AutoCAD Fundamentals	N/A		4/7	PFA	
300	8607000	Engineering Technology					STEM
	8600570	Engineering Technology I	2		1.0	PFA	Program Completion = 4 <sup>th</sup> Science Credit
	8600670	Engineering Technology II	2		1.0	PFA	
	8601770	Engineering Technology III	3		1.0	PFA	
300	8600200	Geospatial/Geographic Information Systems (GIS) Technology					Information Technology
	8600260	Introduction to GIS/RS Technology	2		1.0		
	8600270	Essential GIS Tools	2	A	1.0		
	8600280	GIS Analysis & Modeling	2		1.0	PFA	
	8600290	Advanced GIS Applications	2	B	1.0	PFA	
300	9400300	Pathways to Engineering (PLTW)					STEM
	8600520	Principles of Engineering	3		1.0	PFA	
	8600550	Introduction to Engineering Design	3		1.0	PFA	
	8600530	Digital Electronics	3		1.0	PFA	
	8600620	Aerospace Engineering	3		1.0	PFA	
	8600650	Engineering Design & Development	3		1.0	PFA	


STEM = Science, Technology, Engineering & Mathematics

\* PFA = Performing & Fine Arts Credit

SC = 4th Science Credit

SS = 4th Social Studies Credit

Career Academies and Career Clusters Offered by High School -- Grades 9-12

	Astronaut	Bayside	Cocoa	Cocoa Beach	Eau Gallie	Heritage	Melbourne	Merritt Island	Palm Bay	Rockledge	Satellite	Space Coast	Titusville	Viera
<b>CAREER ACADEMY THEMES</b>														
Business and Finance	•						•							•
Digital Arts & Media														•
Engineering	•	•						•				•		
Fine Arts				•			•			•				
Health Sciences	•											•		
Hospitality & Tourism								•		•				
International Business				•										
Law									•	•				
Teaching Professions												•		
Technology			•						•					
Wellness			•	•	•									
<b>CAREER CLUSTERS</b>														
Business and Industry													•	
Health and Human Services													•	
Visual & Performing Arts													•	

# Accelerated Programs

## Postsecondary Technical Courses/Programs

### Dual Enrollment

Dual enrollment allows students to enroll in postsecondary instruction and receive both postsecondary and secondary credit. The intent is to broaden curricular options, increase depth of study opportunities, and shorten the time necessary for completing a postsecondary certificate or degree. CTE dual enrollment is not intended to enable students to participate in isolated courses unrelated to a program.

Dual enrollment courses offered on the high school campus are listed in this booklet along with the secondary courses. Refer to the 2010-2011 BCC Catalog or website for additional courses needed for an A.S. degree, college credit certificate, or postsecondary vocational certificate program (PSAV) completion.

Guidelines for Vocational Dual Enrollment programs are contained in the Interinstitutional Articulation Agreement. For further information, please contact Janice Scholz at 633-1000, ext. 384

### Statewide Articulation Agreements - Industry Certification to AAS/AS Degree

The State Board of Education has approved Statewide Career and Technical Education Articulation Agreements, based on industry certification, which allows students to earn articulated credits in AAS/AS programs through the attainment of Industry Certifications. The Gold Standard Career Pathways Industry Certification Articulation Agreements can be found on the FL DOE website:

[http://www.fldoe.org/workforce/dwdframe/artic\\_indcert2aas.asp](http://www.fldoe.org/workforce/dwdframe/artic_indcert2aas.asp)

### Advance Standing

Agreements with postsecondary institutions allow students to gain advance standing credit for selected courses when they enroll and successfully complete the next level of coursework in the same A.S., college credit certificate, or technical certificate program at the postsecondary level.

In order to be eligible to have advance standing credit placed on the student's postsecondary transcript, the criteria set forth in each program's memorandum of understanding (MOU) with the institution must be met. Students will not be charged any tuition or fees for advance standing credit awarded.

The following MOU's are in place:

#### Advance Standing Agreements with Brevard Community College

Accounting Operations	Drafting/Illustrative Design Technology
Automotive Service Technology – for NATEF certified programs	Engineering Technology
Communications Technology	Finance
Criminal Justice Technology	Marketing
Culinary Arts	Network Support Services
Digital Design	PC Support Services
Drafting	TV Production

#### Advance Standing Agreements with Johnson and Wales University

Culinary Operations – PBHS & MHS  
Finance – NAF Career Academy  
Hospitality and Tourism – NAF Career Academy

#### Advance Standing Agreement with Keiser University

Culinary Operations – District-wide Culinary Arts

#### Advance Standing Agreement with Northwestern University Ohio

Automotive Service Technology-EGHS, MIHS, RHS, SHS & THS

#### NONDISCRIMINATION NOTICE

It is the policy of the School Board of Brevard County to offer the opportunity to all **students** to participate in appropriate programs and activities without regard to race, color, gender, religion, national origin, disability, marital status, or age, except as otherwise provided by Federal law or by Florida state law.

A **student** having a grievance concerning discrimination may contact:

Dr. Brian T. Binggeli  
Superintendent  
Brevard Public Schools

Ms. Cyndi Van Meter  
Associate Superintendent,  
Division of Curriculum  
and Instruction,  
Equity Coordinator

Dr. Walter Christy, Director  
Secondary Education

Ms. Pamela Treadwell, Director  
ESE Administrative Support Services  
ADA/Section 504 Coordinator

School Board of Brevard County  
2700 Judge Fran Jamieson Way  
Viera, Florida 32940-6601  
(321) 633-1000

This Publication or portions of this publication can be made available to persons with disabilities in a variety of formats, including large print, Braille or audiotape. Telephone or written request should include your name, address, and telephone number. Requests should be made to Kim Riddle, Exceptional Education Projects, 633-1000, ext. 535, at least two (2) weeks prior to the time you need the publication.