

Brevard Public Schools



Career & Technical Education
...preparing students for *SUCCESS*

Program Offerings 2011 - 2012

The Office of Career & Technical Education provides leadership, service and connections to prepare learners for life, work and careers.

To contact the Office of Career & Technical Education call:
321-633-1000 extension 380

or

Visit our website at:
<http://ctebrevard.com/>

Superintendent

Brian Binggeli, Ed.D.

Brevard County School Board Members

Dr. Barbara Murray, Chairman

Amy Knessy, Vice-Chairman

Karen Henderson

Dr. Michael Krupp

Andy Ziegler

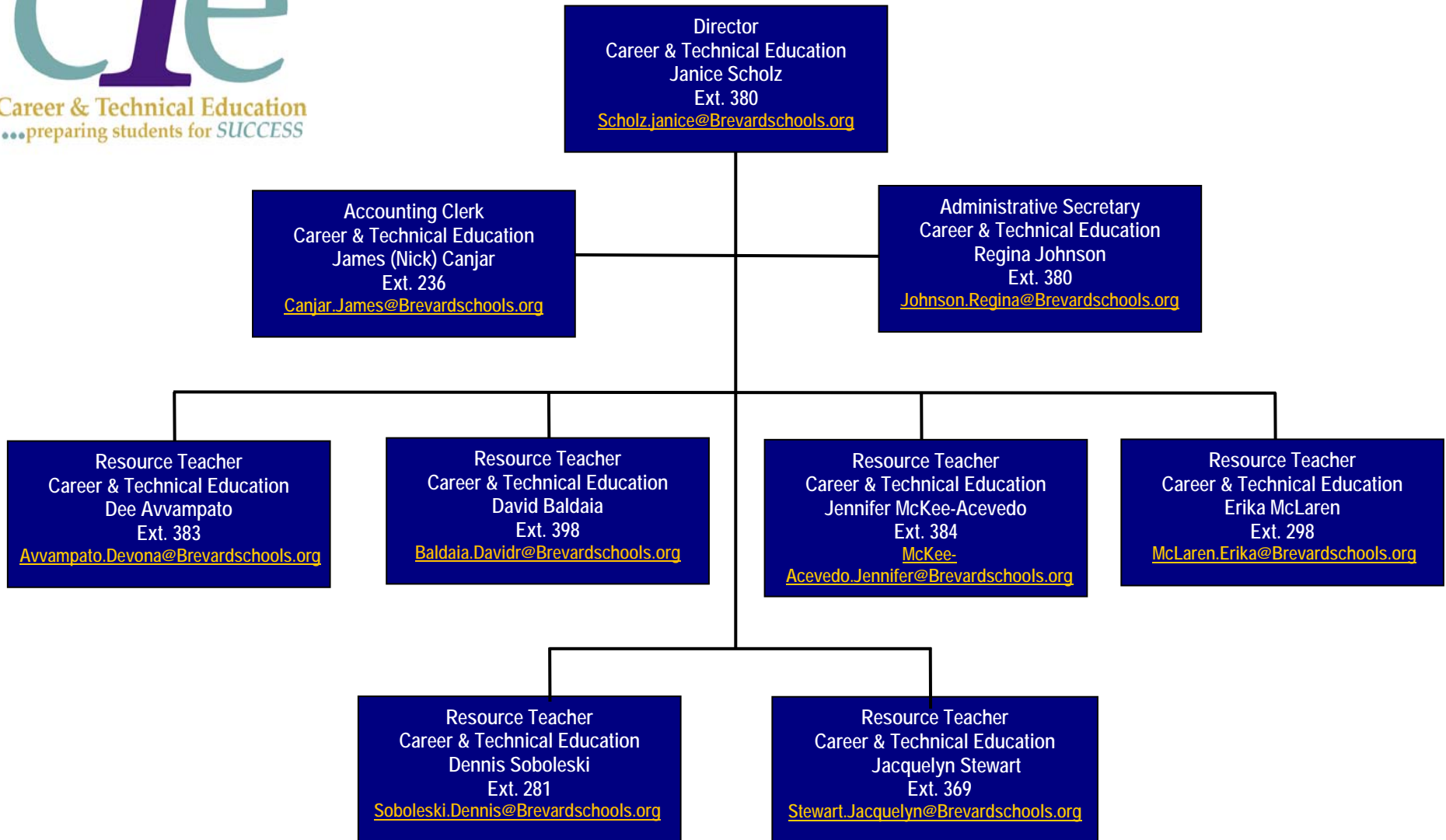
August 2011

TABLE OF CONTENTS


CONTENTS	PAGE
Career & Technical Contact Information	iii
Career & Technical Lab Utilization Chart	iv
PROGRAM AREA	
Orientation / Exploration	1
Business Technology Education	2
Family and Consumer Sciences	4
Health Science Education	6
Industrial Education	7
Marketing Education	9
Public Service Education	10
Technology Education	11
Career Academies and Career Clusters	12
Dual Enrollment (A.S., C.C.C., A.A.S., PSAV)	13
Advance Standing	13

Where Career and Technical Education programs are comprised of sequential courses, the program titles are printed in BOLD and the course numbers and titles are listed below the program title.

Office of Career & Technical Education Contact Information



Brevard Public Schools Career and Technical Education Lab Utilization - SY 2011 - 2012

 SCHOOL	Technology Ed/Industrial Ed										Public Service		Family & Consumer				Health		Mkt	Business Tech Ed			Total Labs											
	A/C-Refrig/Heating	Auto Collision-Repair/Refinishing	Automotive Service Tech	Automation & Production Technology	Communications Tech	Construction Tech	Drafting & Design	Engineering Tech	GPS/GIS Technology	Integrated Technology Studies	Marine Svs. Tech	TV Production	Criminal Justice	Environmental-Water Technology	Teacher Assisting	Clothing/Interior	Culinary Arts	Early Childhood Ed	Fashion Design	Foods & Nutrition	Interior Design	Multi-Purpose		Dental Aide	Patient Care Assisting	First Responder/Wellness	Marketing	Keyboarding/Computer Apps	Multi Use Labs: CCC, Accounting, Web Design, Digital Design & New Media Tech	Networking-Cisco PC Support				
Astronaut H.S.						■	■	■																◆	■			■	■	■	■	■	10	
Bayside H.S.					■		■	■			■						◆	■							◆				■	■	■	■	■	11
Cocoa Beach J/S H.S.									■										■	■						■			■				5	
Cocoa H.S.		■					■										◆									■			■	■	■	■	7	
Eau Gallie H.S.			■				■	■			■							◆	■							■			■	■	■	■	9	
Edgewood J/S H.S.											■								■										■				2	
Heritage H.S.			■	■			■						■							■	■		■		■				■	■	■	■	11	
Melbourne H.S.						■		■			■						◆		■	■					◆				■	■	■	■	11	
Merritt Island H.S.			■				■	■										◆		■	■					■			■	■			8	
Palm Bay H.S.					■	■	■	■				■					◆	◆	■						◆				■	■	■	■	12	
Rockledge H.S.			■				■					■							■	■					◆		■		■	■			9	
Satellite H.S.			■		■		■											◆	■	■						■			■				7	
Space Coast J/S H.S.	■						■	■			■				■					■	■						■		■				8	
Titusville H.S.			■								■						◆		■	■					◆	◆			■	■	■	■	10	
Viera H.S.					■	■					■							◆		■	■	■		■		■			■	■			10	
Westshore J/S H.S.																																	0	
Central Middle									■														■					■					3	
Clearlake Middle									■							■				■								■					4	
Cocoa Beach J/S H.S.									■																								1	
DeLaura Middle									■							■				■								■					4	
Edgewood J/S H.S.									■							■				■								■					3	
Hoover Middle									■							■				■								■					4	
Jackson Middle									■							■				■			■					■					4	
Jefferson Middle									■							■				■								■					4	
Johnson Middle									■		■					■				■								■	■				6	
Kennedy Middle									■							■				■								■					3	
Madison Middle									■							■				■								■					3	
McNair Middle									■							■				■			■					■					5	
Space Coast J/S H.S.									■							■				■								■					2	
Southwest Middle									■	■	■									■								■	■				6	
Stone Middle									■							■				■								■					4	

■ = Current Programs
◆ = Dual Enrollment Courses

Lab duplication may occur at Jr/Sr schools

TOTAL 186

**School Board of Brevard County
Career and Technical Programs/Courses
2011-2012**

ORIENTATION / EXPLORATION - Grades 7 & 8

FTE Prog. No.	Course Number	Program and Course Titles	
102	8000200*	M/J Exploratory Career Wheel 1 & Career Planning	Career Exploratory Wheel
102	8000210	M/J Exploratory Career Wheel 2	Technology Education
102	8000220	M/J Exploratory Career Wheel 3	Family and Consumer Sciences
102	8000230	M/J Exploratory Career Wheel 4	Business Technology Education
102	8200110	Business Keyboarding	Business Management & Administrative
102	8200120	Business Leadership Skills	Business Management & Administrative
102	8409100	Careers in Education	Education & Training
102	8209100	Careers in Fashion and Interior Design	Arts, A/V Technology & Communication
102	8200220	Computer Applications in Business 1	Business Management & Administrative
102	8200210	Computer Applications in Business 2	Business Management & Administrative
102	8809200	Culinary Careers	Hospitality & Tourism
102	8600030	Exploration of Communications Technology	Science, Technology, Engineering & Mathematics
102	8600040	Exploration of Production Technology	Science, Technology, Engineering & Mathematics
102	8600020	Exploring Technology	Science, Technology, Engineering & Mathematics
102	8600010	Introduction to Technology	Science, Technology, Engineering & Mathematics
102	8500230	Personal Development	Human Services
102	8209020	Computing for College and Careers	Arts, AV, Technology and Communication Career Cluster

*Required A++ Legislation – career and education planning course

BUSINESS TECHNOLOGY EDUCATION

Grades 9 - 12

FTE Prog. No.	Program/ Course Number	Program and Course Titles	State Level	Occupational Completion Points	PS/HS Credits	Performing Fine Arts/Science/ Social Studies Substitutions *	Career Cluster
300	8200410	Business Cooperative Education - OJT	2		Multiple		Business Management & Administration
300	8200420	Business Cooperative Education Organization and Management	2		Multiple		Business Management & Administration
300	8200100	Business Education Directed Study	2		Multiple		Business Management & Administration
300	8200330	Computer & Business Skills	2		.5		Business Management & Administration
300	8200320	Keyboarding & Business Skills	2		.5		Business Management & Administration
300	8203400	Accounting Operations					Business Management & Administration
	8209020	Computing for College and Careers	2	A	1.0		
	8203310	Accounting Applications 1	2		1.0		
	8203320	Accounting Applications 2	2	B	1.0		
300	8212500	Administrative Office Specialist					Business Management & Administration
	8209020	Computing for College and Careers	2	A	1.0		
	8212120	Business Software Applications 1	2	B	1.0		
	8209510	Digital Design 1	2	C	1.0		
300	8215200	Business Supervision & Management					Business Management & Administration
	8209020	Computing for College and Careers	2	A	1.0		
	8215140	Business Supervision 1	2	C	1.0		
	8215150	Business Supervision 2	2		1.0		
300	8209600	Digital Design					Arts, A/V Technology & Communication
	8209020	Computing for College and Careers	2	A	1.0		
	8209510	Digital Design 1	2	B	1.0	PFA	
	8209520	Digital Design 2	3		1.0	PFA	
	8209530	Digital Design 3	3	C	1.0	PFA	

* PFA = Performing & Fine Arts Credit

SC = 4th Science Credit

SS = 4th Social Studies Credit

BUSINESS TECHNOLOGY EDUCATION

Grades 9 - 12 (continued)

FTE Prog. No.	Program/ Course Number	Program and Course Titles	State Level	Occupational Completion Points	PS/HS Credits	Performing Fine Arts/Science/ Social Studies Substitutions*	Career Cluster
300	8216100	International Business					Business Management & Administration
	8209020	Computing for College and Careers	2	A	1.0		
	8203310	Accounting Applications 1	2		1.0		
	8216110	International Business Systems	2		1.0		
	8216120	International Finance and Law	3		1.0		
	8216130	Business Internship	2	B	1.0		
300	8212300	Medical Administrative Specialist					Business Management & Administration
	8209020	Computing for College and Careers	2	A	1.0		
	8212201	Medical Office Technology 1	2	B	1.0		
	8212202	Medical Office Technology 2	2	C	1.0		
300	8208000	Network Support Services					Information Technology
	8209020	Computing for College and Careers	2	A	1.0		
	8207020	Networking 1	2	B	1.0		
	8207030	Networking 2 Infrastructure	3	C	1.0		
300	8207400	New Media Technology					Information Technology
	8209020	Computing for College and Careers	2	A	1.0		
	8207410	New Media & Digital Imaging Fundamentals	2	B	1.0	PFA	
	8207420	Digital Video & Sound Fundamentals	2	C	1.0	PFA	
	8207110	Web Design 1	2	D	1.0	PFA	
300	8207340	PC Support Services					Information Technology
	8209020	Computing for College and Careers	2	A	1.0		
	8207210	PC Support 1	2		1.0		
	8207220	PC Support 2	3	B	1.0		
	8207230	PC Support 3	3		1.0		
300	8207500	Web Design					Information Technology
	8209020	Computing for College and Careers	2	A	1.0		
	8207110	Web Design 1	2		1.0	PFA	
	8207120	Web Design 2	3	B	1.0	PFA	
	8207130	Web Design 3	3		1.0	PFA	

* PFA = Performing & Fine Arts Credit

SC = 4th Science Credit

SS = 4th Social Studies Credit

FAMILY AND CONSUMER SCIENCES

Grades 9 - 12

FTE Prog. No.	Program/ Course Number	Program and Course Titles	State Level	Occupational Completion Points	PS/HS Credits	Performing Fine Arts/Science/ Social Studies Substitutions*	Career Cluster
300	8500310	Child Development	2		.5		Education & Training
300	8500380	Fabric Construction	2		.5	PFA	Arts, A/V Technology & Communication
300	8500345	Family Dynamics	2		.5		Human Services
300	8500395	Food Science Technology	2		1.0	SC	Agriculture, Food & Natural Resources
300	8500355	Nutrition and Wellness	2		.5	SC	Hospitality & Tourism
300	8500300	Parenting Skills	2		.5		Human Services
300	8500120	Personal & Family Finance	2		.5		Finance
300	8500390	Principles of Food Preparation	2		.5		Hospitality & Tourism
300	8800500	Culinary Arts					Hospitality & Tourism
	8800510	Culinary Arts 1	2	A	1.0		
	8800520	Culinary Arts 2	2	B	1.0	PFA	
	8800530	Culinary Arts 3	2	C	1.0	PFA	
	8800540	Culinary Arts 4	3	D	1.0		
		or					
		Culinary Operations – (Voc. Dual Enroll)					
300	8800510	Culinary Arts 1	2	A	1.0		
103	FSS 0208	Food Production I, Stocks & Sauces	N/A		3/5		
103	FSS 0228	Food Production II, Presentation & Service	N/A		3/5	PFA	
103	FSS 0064	Pastries & Desserts	N/A		3/5	PFA	
103	FSS 0740	Regional Cuisine – American & International	N/A		3/5		

* PFA = Performing & Fine Arts Credit SC = 4th Science Credit SS = 4th Social Studies Credit

FAMILY AND CONSUMER SCIENCES

Grades 9 – 12 (continued)

FTE Prog. No.	Program/ Course Number	Program and Course Titles	State Level	Occupational Completion Points	PS/HS Credits	Performing Fine Arts/Science/ Social Studies Substitutions *	Career Cluster
300	8405100	Early Childhood Education					Education & Training
	8405110	Early Childhood Education 1 New	2	A and B	1.0		
	8405120	Early Childhood Education 2 New	2		1.0		
	8405130	Early Childhood Education 3 New	2	C	1.0	PFA	
	8405140	Early Childhood Education 4 New	3	D	1.0		
		or					
		Early Childhood Education – Infant/Toddler Specialization, College Credit Certificate					
300	8405110	Early Childhood Education 1 New	2	A and B	1.0		
103	EEC 1001	Introduction to Early Childhood Education	N/A		3/5		
103	EEC 1200	Early Childhood Curriculum	N/A		3/5		
103	EEC 2710	Conflict Resolution in Early Childhood Education	N/A		3/5		
103	CHD 1200	Infant/Toddler Development	N/A		3/5		
300	8506400	Fashion Design Services					Arts, A/V Technology & Communication
	8506405	Design Services Core	2	A	1.0	PFA	
	8506410	Principles of Fashion Design Services	2	B	1.0	PFA	
	8506420	Pattern Design Techniques	2	C	1.0	PFA	
	8506430	Fashion Design Specialist	3	D	1.0	PFA	
300	8506500	Interior Design Services					Arts, A/V Technology & Communication
	8506405	Design Services Core	2	A	1.0	PFA	
	8506540	Principles of Interior Design Services	2	B	1.0	PFA	
	8506550	Interior Design Techniques	2	C	1.0	PFA	
	8506560	Interior Design Specialist	3	D	1.0	PFA	

* PFA = Performing & Fine Arts Credit SC = 4th Science Credit SS = 4th Social Studies Credit

HEALTH SCIENCES EDUCATION

Grades 9 - 12

FTE Prog. No.	Program/ Course Number	Program and Course Titles	State Level	Occupational Completion Points	PS/HS Credits	Performing Fine Arts/Science/ Social Studies Substitutions *	Career Cluster	
300	8417140	Dental Aide				Program Completion = 4th Science Credit	Health Science	
	8417100	Health Science 1 **	2		1.0			
	8417110	Health Science 2	2	A	1.0			
	8417141	Dental Aide 3	2	B	1.0			
300	8417170	Emergency Medical Responder				Program Completion = 4th Science Credit	Health Science	
	8417100	Health Science 1 **	2		1.0			
	8417110	Health Science 2	2	A	1.0			
	8417171	Emergency Medical Responder 3	2	B	1.0			
300	8417000	Health and Wellness				Program Completion = 4th Science Credit	Health Science	
	8417100	Health Science 1 **	2		1.0			
	8417110	Health Science 2	2	A	1.0			
	8417120	Health and Wellness 3	2	B	1.0			
300	8417210	Nursing Assistant				Program Completion = 4th Science Credit	Health Science	
	8417100	Health Science 1 **	2		1.0			
		or						
	8417110	Health Science 2	2	A	1.0			
		or						
	103	HSC 1000	Introduction to Health Care	N/A				3/5
	103	HSC 1532	Advanced Medical Terminology	N/A				3/5
			and					
	103	HCP 0003	Basic Healthcare Worker	N/A				3/5
	103	HCP 0121	Articulated Nursing Assistant	N/A				3/5
103	HCP 0332	Advanced Home Health Aide	N/A		2/3			
103	HCP 0020	Patient Care Assistant	N/A		3/5			

* PFA = Performing & Fine Arts Credit SC = 4th Science Credit SS = 4th Social Studies Credit

** = The course Anatomy and Physiology may be substituted for the course Health Science 1

INDUSTRIAL EDUCATION

Grades 9 – 12

FTE Prog. No.	Program/ Course Number	Program and Course Titles	State Level	Occupational Completion Points	PS/HS Credits	Performing Fine Arts/Science/ Social Studies Substitutions *	Career Cluster
300	8700400	Industrial Cooperative Education - OJT	2		Multiple		Manufacturing
300	8723000	A/C Refrigeration and Heating					Architecture & Construction
	8713010	A/C Refrigeration and Heating Technology 1	2		1.0		
	8713020	A/C Refrigeration and Heating Technology 2	2	A	1.0		
	8713030	A/C Refrigeration and Heating Technology 3	2		1.0		
	8713040	A/C Refrigeration and Heating Technology 4	2	B	1.0		
300	9200100	Automation & Production Technology					Manufacturing
	9200110	Automation & Production Technology 1	2	A	1.0		
	9200120	Automation & Production Technology 2	2	B	1.0		
	9200130	Automation & Production Technology 3	3	C	1.0		
300	8709000	Automotive Collision Repair and Refinishing					Transportation, Distribution & Logistics
	8709010	Automotive Collision Repair and Refinishing 1	2		1.0		
	8709020	Automotive Collision Repair and Refinishing 2	2		1.0		
	8709030	Automotive Collision Repair and Refinishing 3	2	A	1.0		
	8709040	Automotive Collision Repair and Refinishing 4	2	B	1.0		
	8709050	Automotive Collision Repair and Refinishing 5	2	C	1.0		
	8709060	Automotive Collision Repair and Refinishing 6	2		1.0		
300	8709400	Automotive Service Technology					Transportation, Distribution & Logistics
	8709410	Automotive Service Technology 1	2	A	1.0		
	8709420	Automotive Service Technology 2	2	B	1.0		
	8709430	Automotive Service Technology 3	2	C	1.0		
	8709440	Automotive Service Technology 4	2	D	1.0		
	8709450	Automotive Service Technology 5	2	E	1.0		
	8709460	Automotive Service Technology 6	2	F	1.0		
	8709470	Automotive Service Technology 7	3	G	1.0		
	8709480	Automotive Service Technology 8	3		1.0		
300	8725000	Drafting					Architecture & Construction
	8725010	Drafting 1	2	A	1.0	PFA	
	8725020	Drafting 2	2		1.0	PFA	
	8725030	Drafting 3	3		1.0	PFA	
	8725040	Drafting 4	3	B	1.0	PFA	
300	8751000	Marine Service Technology					Transportation, Distribution & Logistics
	8751010	Marine Service 1	2		1.0		
	8751020	Marine Service 2	2	A	1.0		
	8751030	Marine Service 3	2	B	1.0		
	8751040	Marine Service 4	2		1.0		
	8751050	Marine Service 5	2		1.0		
	8751060	Marine Service 6	2		1.0		

* PFA = Performing & Fine Arts Credit

SC = 4th Science Credit

SS = 4th Social Studies Credit

INDUSTRIAL EDUCATION

Grades 9 – 12 (continued)

FTE Prog. No.	Program/ Course Number	Program and Course Titles	State Level	Occupational Completion Points	PS/HS Credits	Performing Fine Arts/Science/ Social Studies Substitutions *	Career Cluster
300	8772100	Television Production					Arts, A/V Technology & Communication
	8772110	Television Production 1	2		1.0	PFA	
	8772120	Television Production 2	2		1.0	PFA	
	8772130	Television Production 3	3	A	1.0		
	8772140	Television Production 4	3		1.0		
	8772150	Television Production 5	3		1.0	PFA	
	8772160	Television Production 6	3	B	1.0	PFA	

* PFA = Performing & Fine Arts Credit

SC = 4th Science Credit

SS = 4th Social Studies Credit

MARKETING EDUCATION

Grades 9 - 12

FTE Prog. No.	Program/ Course Number	Program and Course Titles	State Level	Occupational Completion Points	PS/HS Credits	Performing Fine Arts/Science/ Social Studies Substitutions*	Career Cluster
300	8300430	Guided Workplace Learning	2		Multiple		Diversified Education
300	8812000	Business Ownership	3		1.0	PFA	Marketing Sales & Service
300	8800410	Marketing Cooperative Education - OJT	2		Multiple		Marketing Sales & Service
300	8800100	Marketing Education Directed Study	2		Multiple		Marketing Sales & Service
300	8815100	Finance					Finance
	8815150	Finance and Business Technology	2	A	1.0		
	8815110	Financial Operations	3	B	1.0		
	8815120	Personal Financial Planning	3	C	1.0		
	8815130	Financial Internship OR	2	B	1.0		
	8800410	Marketing Cooperative Education OJT	2	B	Multiple		
	8203310	Accounting Applications 1	2		1.0		
300	8845100	Hospitality and Tourism					Hospitality & Tourism
	8850110	Introduction to Hospitality and Tourism	2	A	1.0		
	8845140	Computer Tech for Travel and Tourism	2		1.0		
	8845130	Hospitality and Tourism Internship OR	2	B	1.0		
	8800410	Marketing Cooperative Education OJT	2	B	Multiple		
	8845120	Travel and Tourism Marketing and Management	3	C	1.0		
300	8827100	Marketing					Marketing Sales & Service
	8827110	Marketing Essentials	2		1.0	PFA	
	8827120	Marketing Applications	2	A	1.0	PFA	
	8827130	Marketing Management	2	B	1.0	PFA	

* PFA = Performing & Fine Arts Credit

SC = 4th Science Credit

SS = 4th Social Studies Credit

PUBLIC SERVICE EDUCATION

Grades 9 - 12

FTE Prog. No.	Program/ Course Number	Program and Course Titles	State Level	Occupational Completion Points	PS/HS Credits	Performing Fine Arts/Science/ Social Studies Substitutions*	Career Cluster
300	8918000	Criminal Justice Operations				Program Completion = 4th Social Studies Credit	Law, Public Safety & Security
	8918010	Criminal Justice Operations 1	2	A	1.0		
	8918020	Criminal Justice Operations 2	2		1.0		
	8918030	Criminal Justice Operations 3	3		1.0		
300	8007100	Environmental Water Technology				Program Completion = 4th Science Credit	Agriculture, Food & Natural Resources
	8007110	Introduction to Environmental Water Technology	2		1.0		
	8007120	Intermediate Environmental Water Technology	2		1.0		
	8007130	Advanced Environmental Water Technology	2	A	1.0		
300	8909000	Teacher Assisting					Education & Training
	8909010	Teacher Assisting 1	2	A	1.0		
	8909020	Teacher Assisting 2	2		1.0		
	8909030	Teacher Assisting 3	2		1.0		
	8909040	Teacher Assisting 4	2	B	1.0		

* PFA = Performing & Fine Arts Credit SC = 4th Science Credit SS = 4th Social Studies Credit

TECHNOLOGY EDUCATION

Grades 9 - 12

FTE Prog. No.	Program/ Course Number	Program and Course Titles	State Level	Occupational Completion Points	PS/HS Credits	Performing Fine Arts/Science/ Social Studies Substitutions *	Career Cluster
300	8601900	Advanced Technology Applications	3		Multiple (Max. = 3.0)	PFA	STEM
300	8601800	Work-Based Experience	2		Multiple (Max. = 3.0)		STEM
300	8601000	Communications Technology					STEM
	8601010	Communications Technology I	2		1.0	PFA	
	8601020	Communications Technology II	2		1.0	PFA	
	8601030	Communications Technology III	3		1.0	PFA	
300	8600700	Construction Technology					STEM
	8600710	Construction Technology I	2		1.0		
	8600720	Construction Technology II	2		1.0	PFA	
	8600730	Construction Technology III	3		1.0	PFA	
300	8600800	Drafting/Illustrative Design Technology					STEM
	8600810	Drafting/Illustrative Design Technology I	2		1.0	PFA	
	8600820	Drafting/Illustrative Design Technology II	2		1.0	PFA	
	8600830	Drafting/Illustrative Design Technology III	3		1.0	PFA	
		Drafting –College Credit Certificate					Architecture & Construction
103	TARC1120	Architectural Drafting	N/A		4/7	PFA	
103	ETDC2320	AutoCAD Fundamentals	N/A		4/7	PFA	
300	8607000	Engineering Technology					STEM
	8600570	Engineering Technology I	2		1.0	PFA	Program Completion = 4 th Science Credit
	8600670	Engineering Technology II	2		1.0	PFA	
	8601770	Engineering Technology III	3		1.0	PFA	
300	8600200	Geospatial/Geographic Information Systems (GIS) Technology					Information Technology
	8600260	Introduction to GIS/RS Technology	2		1.0		
	8600270	Essential GIS Tools	2	A	1.0		
	8600280	GIS Analysis & Modeling	2		1.0	PFA	
	8600290	Advanced GIS Applications	2	B	1.0	PFA	
300	9400300	Pathways to Engineering (PLTW)					STEM
	8600520	Principles of Engineering	3		1.0	PFA	
	8600550	Introduction to Engineering Design	3		1.0	PFA	
	8600530	Digital Electronics	3		1.0	PFA	
	8600620	Aerospace Engineering	3		1.0	PFA	
	8600650	Engineering Design & Development	3		1.0	PFA	


STEM = Science, Technology, Engineering & Mathematics

* PFA = Performing & Fine Arts Credit

SC = 4th Science Credit

SS = 4th Social Studies Credit

Career Academies and Career Clusters Offered by High School • Grades 9 – 12

	Astronaut	Bayside	Cocoa	Cocoa Beach	Eau Gallie	Heritage	Melbourne	Merritt Island	Palm Bay	Rockledge	Satellite	Space Coast	Titusville	Viera
CAREER ACADEMY THEMES														
Business and Finance	●						●							●
Digital Arts & Media														●
Engineering	●	●						●				●		
Environmental Studies						●								
Fine Arts		●			●			●			●			
Health Sciences	●												●	
Hospitality & Tourism								●		●				
International Business				●										
Law								●		●				
Teaching Professions												●		
Technology			●						●					
Wellness			●		●	●								
CAREER CLUSTERS														
Business and Industry													●	
Health and Human Services													●	
Visual & Performing Arts													●	

Accelerated Programs

Postsecondary Technical Courses/Programs

Dual Enrollment

Dual enrollment allows students to enroll in postsecondary instruction and receive both postsecondary and secondary credit. The intent is to broaden curricular options, increase depth of study opportunities, and shorten the time necessary for completing a postsecondary certificate or degree. CTE dual enrollment is not intended to enable students to participate in isolated courses unrelated to a program.

Dual enrollment courses offered on the high school campus are listed in this booklet along with the secondary courses. Refer to the 2011-2012 BCC Catalog or website for additional courses needed for an A.S. degree, college credit certificate, or postsecondary vocational certificate program (PSAV) completion.

Guidelines for Vocational Dual Enrollment programs are contained in the Interinstitutional Articulation Agreement. For further information, please call Career & Technology Education 633-1000, ext. 380

Statewide Articulation Agreements - Industry Certification to AAS/AS Degree

The State Board of Education has approved Statewide Career and Technical Education Articulation Agreements, based on industry certification, which allows students to earn articulated credits in AAS /AS programs through the attainment of Industry Certifications. The Gold Standard Career Pathways Industry Certification Articulation Agreements can be found on the FL DOE website:

http://www.fldoe.org/workforce/dwdframe/artic_indcert2aas.asp

Advance Standing

Agreements with postsecondary institutions allow students to gain advance standing credit for selected courses when they enroll and successfully complete the next level of coursework in the same A.S., college credit certificate, or technical certificate program at the postsecondary level.

In order to be eligible to have advance standing credit placed on the student's postsecondary transcript, the criteria set forth in each program's memorandum of understanding (MOU) with the institution must be met. Students will not be charged any tuition or fees for advance standing credit awarded.

The following MOU's are in place:

Advance Standing Agreements with Brevard Community College

Accounting Operations	Engineering Technology
Automotive Service Technology – for NATEF certified programs	Finance
Communications Technology	Graphics Technology (Web Design)
Criminal Justice Technology	Marketing
Culinary Arts	PC Support Services
Digital Design	TV Production
Drafting	
Drafting/Illustrative Design Technology	

Advance Standing Agreements with Johnson and Wales University

Culinary Operations – PBHS & MHS
Finance – NAF Career Academy
Hospitality and Tourism – NAF Career Academy

Advance Standing Agreement with Keiser University

Culinary Operations – District-wide Culinary Arts

Advance Standing Agreement with Northwestern University Ohio

Automotive Service Technology-EGHS, MIHS, RHS, SHS & THS